

Thousand Steps

SARAH MAXWELL OF DESIGNS BY SARAH J.



Thousand Stairs Quilt designed by: **Sarah J. Maxwell**

Quilt Size: **68" x 92"** • Skill Level: **Beginner**

Thousand Stairs Quilt

Introducing Andover Fabrics new collection: **Thousand Steps** by Sarah J. Maxwell of Designs by Sarah J.
 Quilt designed by Sarah J. Maxwell

Quilt finishes 68" x 92"
 30 Blocks finish 10" x 12"

Studies show that walking just 1,000 steps a day has great benefits for your health. As you make this throw-size quilt, think about the lovely flowers you may see when you need a break and go for a walk. The piecing is easy enough for someone with little sewing experience.

Fabric Requirements

		Yardage	Fabric
Fabric A	sashes	5/8 yard	1275-L
Fabric B	border	2 1/2 yards	1275-LB
Fabric C	sashes	1 1/4 yards	1277-B
Fabric D	blocks	2 1/4 yards	1279-B
Brights	blocks	10" square pack	
Binding		3/4 yard	1277-B
Backing		5 3/4 yards	1279-B

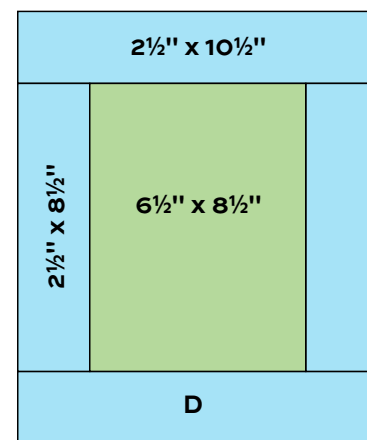
Cutting Directions

Note: Read assembly directions before cutting patches. All measurements are cut sizes and include 1/4" seam allowances. A fat 1/8 is a 9" x 20"-22" cut of fabric. A fat 1/4 is an 18" x 20"-22" cut. Borders are cut the exact lengths required plus 1/4" seam allowances. WOF designates the width of fabric from selvedge to selvedge (approximately 42" wide).

- Fabric A** Cut (36) rectangles 2 1/2" x 4 1/2"
 Cut (35) squares 2 1/2"
- Fabric B** Cut (2) borders 3 1/2" x 86 1/2", cut lengthwise
 Cut (2) borders 3 1/2" x 68 1/2"
- Fabric C** Cut (142) rectangles 2 1/2" x 4 1/2"
- Fabric D** Cut (60) rectangles 2 1/2" x 10 1/2"
 Cut (60) rectangles 2 1/2" x 8 1/2"
- Brights** Cut (1-2) rectangles 6 1/2" x 8 1/2" (30 total)
 Read Step 1 before cutting
 Cut (2-3) squares 2 1/2" (42 total)
 Read Step 1 before cutting
- Binding** Cut (9) strips 2 1/2" x WOF for binding
- Backing** Cut (2) lengths 40" x 102", pieced to fit quilt top with overlap on all sides

Making the Quilt

- There are 2 squares of some fabrics in the 10" square pack, and 1 square of other prints (a total of 42 squares). From the pack, cut a total of 30 rectangles that are 6 1/2" x 8 1/2" for the block centers. Cut a total of 42 squares 2 1/2" from the leftovers of the pack fabrics. These are used in the sashes.
- Referring to the block diagram, join the Fabric D strips to the sides and top and bottom of each 6 1/2" x 8 1/2" rectangle. Make 30 blocks.



Block – Make 30

- Join patches to make 35 Sash 1 (Diagram 1) and 36 Sash 2 (Diagram 2).

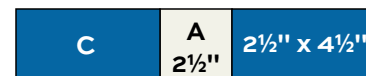


Diagram 1 – Make 35 Sash 1

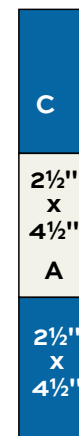


Diagram 2 – Make 36 Sash 2

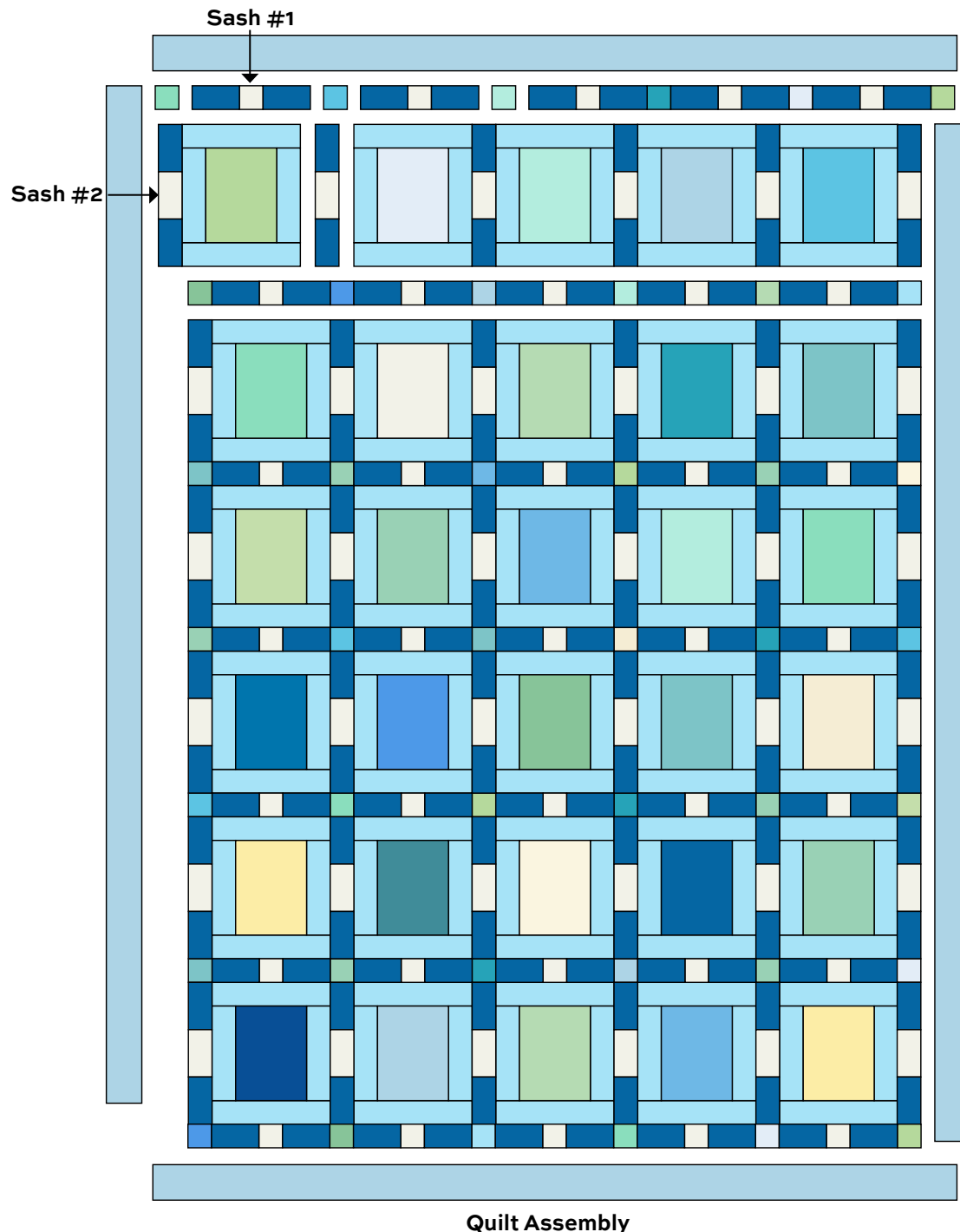
Thousand Stairs Quilt

- Referring to the Quilt Assembly, arrange the blocks into 6 rows of 5 blocks each, being sure that prints are distributed so that no print is near itself. Position 6 Sash 2 between the blocks and at the beginning and end of each row as shown. Once you are satisfied with the arrangement, join the parts to make 6 block rows.
- To make a sash row, arrange 5 Sash 1 alternately with 6 bright $2\frac{1}{2}$ " squares. Repeat this at the top and bottom of the quilt and between each row. Join the parts to make 7 sash rows.

- Finally, join the rows in order.
- Sew long Fabric B borders to the sides. Join shorter borders to the top and bottom.

Finishing the Quilt

- Layer the quilt with batting and backing and baste. Quilt in the ditch around borders and patches. Or, quilt an overall design. Bind to finish the quilt.



Thousand Steps SARAH MAXWELL OF DESIGNS BY SARAH J.



1275-B



1275-L



1275-LB



1275-T



1276-B



1276-LT



1276-T



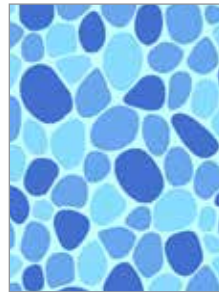
1277-B



1277-G



1277-T



1278-B



1278-T



1278-Y



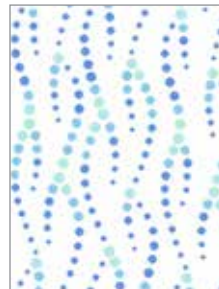
1279-B



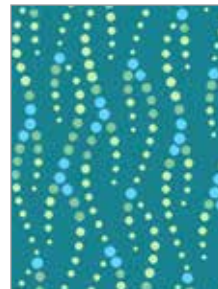
1279-G



1279-L



1280-LB



1280-T



1280-Y



1281-B



1281-G



1281-LG



1281-T



1281-Y

All fabrics are used in quilt pattern. Fabrics shown are 100% of actual size.

Free Pattern Download Available

1384 Broadway, 24th Floor, New York, NY 10018

Tel. (800) 223-5678 • andoverfabrics.com